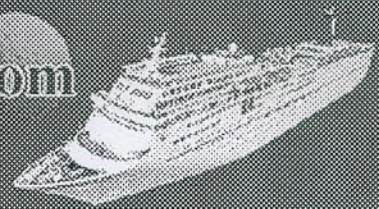


We are
putting the
Back into Golf!

CarnivalGolf.Com

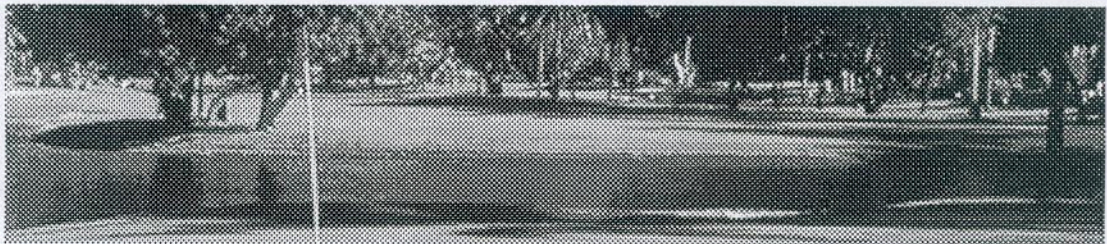


Vessels Reservations Us Instruction Excursions Equipment



ECSTASY
Departing from Long Beach

Panama Canal ~ Repositioning
15 Day



The Fairmont Acapulco Princess Golf Club
Acapulco, Mexico

Established in 1971, The Fairmont Acapulco Princess has long been regarded as having one of Mexico's best resort golf courses. Not particularly long at 6,350 yards, the course offers a significant challenge as many holes feature sand traps and water hazards. Deemed one of the 25 Greatest Golf Resorts by Golf Digest, the course has been host to eight different P.G.A. sectional Pro-Am tournaments, as well as Pro-Am events from Canada, England and Germany. Hosting such events stands as a testimony to Ted Robinson's architectural skill, combining the natural beauty of the area with a challenge that even the most dedicated player can appreciate.

Par: 72, 7,239 Yards
Price: Seasonal

Dec 21 - Apr 10	\$180.00*
Apr 11 - Dec 20	\$165.00*

Los Suenos Marriott Golf Resort
Puntarenas, Costa Rica

The new golf course in Costa Rica is all that we had expected from a Ted Robinson Jr. designed course. This challenging course has one of the most picturesque settings on earth, a dense canopy of exotic plants and trees. Bordered by the Pacific Ocean on one side and rainforest on the other.

Par: 72, 6,707 Yards

Price: \$200.00*



Summit Golf & Resort Panama City, Panama

Summit is a World Class Championship golf Course near Panama City, Panama. Summit Golf & Resort has a long history, originally opening in the 1930's for Americans working in the Panama Canal Zone. The course has been completely renovated to world-class standards. The winning combination of a superior design effort by Jeffrey Myers and the ultimate in construction of Gregori International has created a championship course of the highest caliber. Although it is a fairly long drive at approximately one hour and fifteen minutes, the golf course is in wonderful condition with a nice driving range, complimentary range balls and a cozy clubhouse. Where else can you take a trip from the Atlantic to Pacific Panama with glimpses of the canal and amazing tropical rain forest along the way?

Par: 72 6,626 Yards

Price: \$125.00*